

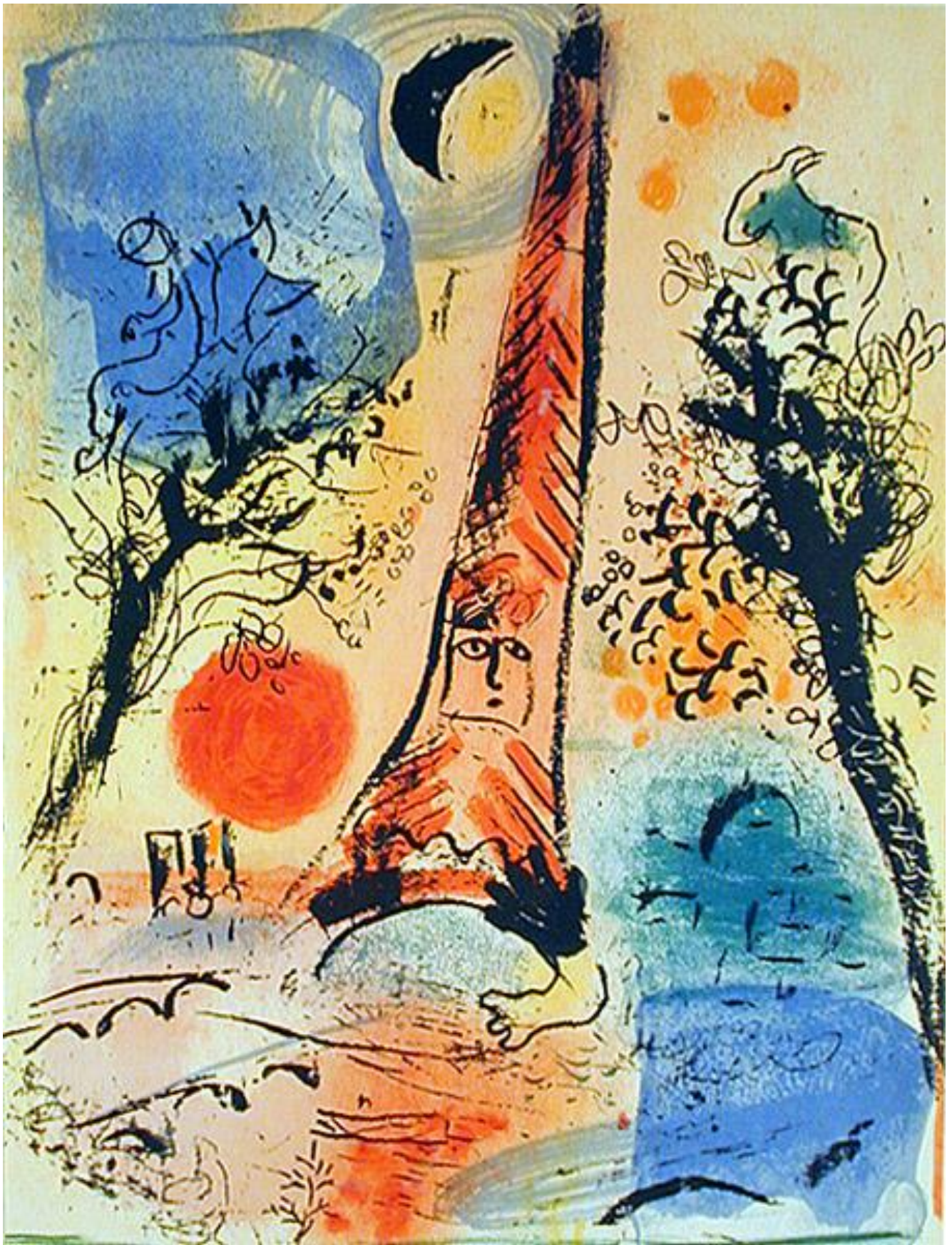
Robert DELAUNEY, *Tour Eiffel, la tour rouge*, 1911



Georges SEURAT, la Tour Eiffel, 1889



Marc CHAGALL, La tour Eiffel



Guillaume APOLLINAIRE, calligramme, 1918

S
A
LUT
M
O N
D E
DONT
JE SUIS
LA LAN
GUE É
LOQUEN
TE QUESA
BOUCHE
O PARIS
TIRE ET TIRERA
T O U JOURS
AUX A L
LEM ANDS